

FKBP8 Antibody (Center)
Affinity Purified Rabbit Polyclonal Antibody (Pab)
Catalog # AP5990c**Specification**

FKBP8 Antibody (Center) - Product Information

| | |
|-------------------|---|
| Application | WB,E |
| Primary Accession | Q14318 |
| Other Accession | Q3B7U9 , O35465 , NP_036313.3 |
| Reactivity | Human |
| Predicted | Mouse, Rat |
| Host | Rabbit |
| Clonality | Polyclonal |
| Isotype | Rabbit IgG |
| Calculated MW | 44562 |
| Antigen Region | 199-226 |

FKBP8 Antibody (Center) - Additional Information**Gene ID** 23770**Other Names**

Peptidyl-prolyl cis-trans isomerase FKBP8, PPIase FKBP8, 38 kDa FK506-binding protein, 38 kDa FKBP, FKBP-38, hFKBP38, FK506-binding protein 8, FKBP-8, FKBP38, Rotamase, FKBP8, FKBP38

Target/Specificity

This FKBP8 antibody is generated from rabbits immunized with a KLH conjugated synthetic peptide between 199-226 amino acids from the Central region of human FKBP8.

Dilution

WB~~1:1000

E~~Use at an assay dependent concentration.

Format

Purified polyclonal antibody supplied in PBS with 0.09% (W/V) sodium azide. This antibody is purified through a protein A column, followed by peptide affinity purification.

Storage

Maintain refrigerated at 2-8°C for up to 2 weeks. For long term storage store at -20°C in small aliquots to prevent freeze-thaw cycles.

Precautions

FKBP8 Antibody (Center) is for research use only and not for use in diagnostic or therapeutic procedures.

FKBP8 Antibody (Center) - Protein Information**Name** FKBP8

Synonyms FKBP38

Function Constitutively inactive PPIase, which becomes active when bound to calmodulin and calcium. Seems to act as a chaperone for BCL2, targets it to the mitochondria and modulates its phosphorylation state. The BCL2/FKBP8/calmodulin/calcium complex probably interferes with the binding of BCL2 to its targets. The active form of FKBP8 may therefore play a role in the regulation of apoptosis. Involved in the inhibition of viral infection by influenza A viruses (IAV) (PubMed:[28169297](#)).

Cellular Location

Mitochondrion. Mitochondrion membrane; Single-pass membrane protein; Cytoplasmic side [Isoform 3]: Mitochondrion membrane; Single-pass membrane protein; Cytoplasmic side

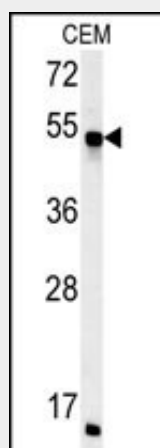
Tissue Location

Widely expressed. Highest levels seen in the brain. Highly abundant in the retina.

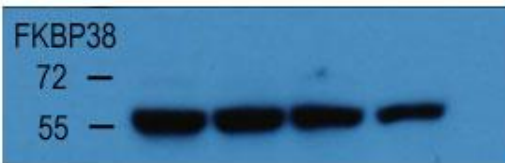
FKBP8 Antibody (Center) - Protocols

Provided below are standard protocols that you may find useful for product applications.

- [Western Blot](#)
- [Blocking Peptides](#)
- [Dot Blot](#)
- [Immunohistochemistry](#)
- [Immunofluorescence](#)
- [Immunoprecipitation](#)
- [Flow Cytometry](#)
- [Cell Culture](#)

FKBP8 Antibody (Center) - Images

FKBP8 Antibody (Center) (Cat. #AP5990c) western blot analysis in CEM cell line lysates (35ug/lane). This demonstrates the FKBP8 antibody detected the FKBP8 protein (arrow).

HepG2 CELL LINE
DC120 0 5 10 20


With HepG2 cell line lysate, the resolved proteins were electrophoretically transferred to PVDF membrane and incubated sequentially with primary antibody FKBP38 (abgent, Cat. AP5990C, 1:1000, 4°C overnight) and horseradish peroxidase-conjugated second antibody. After washing, the bound antibody complex was detected using an ECL chemiluminescence reagent and XAR film (Kodak).